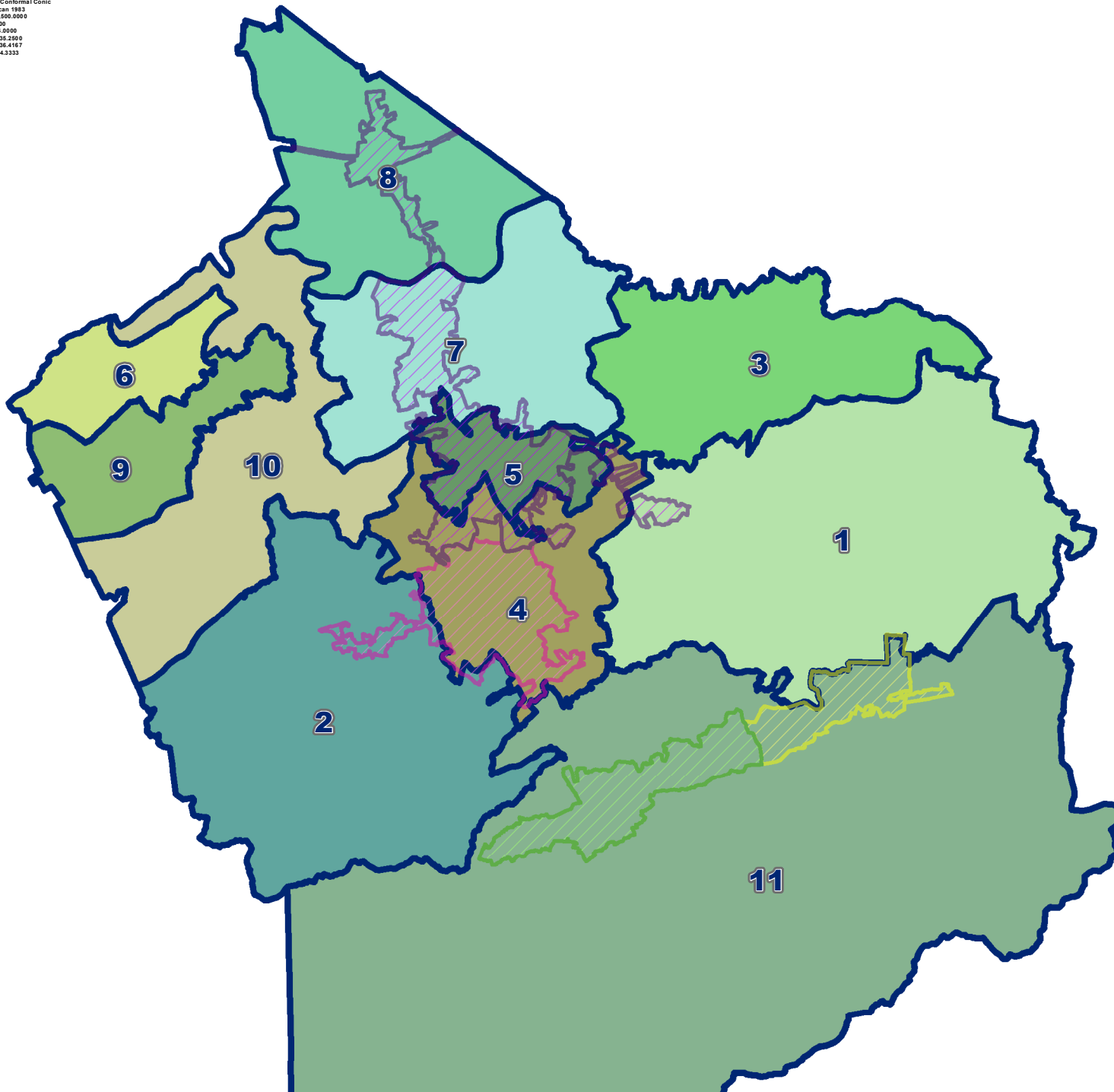


Coordinate System: NAD 1983 StatePlane Tennessee FPS 4100 Feet
 Projection: Lambert Conformal Conic
 Datum: North American 1983
 False Easting: 1,968,500.0000
 False Northing: 0.0000
 Central Meridian: -86.0000
 Standard Parallel 1: 35.2900
 Standard Parallel 2: 36.4167
 Latitude Of Origin: 34.3333
 Units: Foot US

Sevier County Commission 2021

CCD	Name
1	Warren N. Hurst
1	Tommy R. Watts
2	Ben C. Clabo
2	Phil King
3	Mike Chambers
3	Dale Hill
4	Carroll Rauhuff
4	Keith Whaley
4	Ronnie Whaley
5	Fred A. Atchley
5	Michael Maddron
5	Frank Parton
6	Greg Haggard
6	Harold Pitner
7	Ronnie W. Allen
7	Mary Davis
8	Aaron Foster
8	Mike W. Hillard
8	Kent Woods
9	Chuck Godfrey
9	David (Buster) Norton
10	Todd Humble
10	Bryan Delius
11	Gary A. Cole
11	Ray I. Ogle



1 inch = 21,307 feet
 0 0.75 1.5 3 Miles

Sevier County Commission Districts est. 2012

Legend

- Commission District Lines
- County Commission District Blocks
- DISTRICT
- 1st District
- 2nd District
- 3rd District
- 4th District
- 5th District
- 6th District
- 7th District
- 8th District
- 9th District
- 10th District
- 11th District
- Sevierville City Limits
- Pigeon Forge City Limits
- Gatlinburg City Limits
- Pittman Center